

Highly efficient cyclones of type SCC-40

Cyclones of type SCC-40 are used for highly effective cleaning of technological gases and ventilation exhausts from dispersed dust in different industries. Group cyclones (4 in a group) and single cyclones with right and left rotation of gas flow are manufactured.

CHARACTERISTICS

Table 1

№ p/p	Parameters	Value
1	Pressure drop at t=20°C and speed in cyclone body, Pa W _ц =1,6 m/s W _ц =1,9 m/s	1830 2580
2	Efficiency % for dust with ρ _n =2650 kg/m ³ , d ₅₀ =25 μm, not less	91-94
3	Dust content of cleaning air, not more, g/m ³	1000
4	Temperature of cleaning air, not more, °C	400

VOLUME FLOWS OF GROUP CYCLONES (4 IN GROUP)

Table2

Cyclone type	Air flow, m ³ /h		Volume of the bunker
	W=1,6 m/s	W=1,9 m/s	
SCC-40-300x4	1630	1930	0,14
SCC-40-400x4	2890	3430	0,27
SCC-40-500x4	4520	5370	0,5
SCC-40-600x4	6500	7730	0,86
SCC-40-700x4	8950	10630	1,34
SCC-40-800x4	11570	13740	1,98
SCC-40-900x4	14650	17400	2,95
SCC-40-1000x4	18110	21480	3,83
SCC-40-1100x4	21900	26000	5,04
SCC-40-1200x4	25880	30730	6,54

DIMENSIONAL AND CONNECTING SIZES (MM)

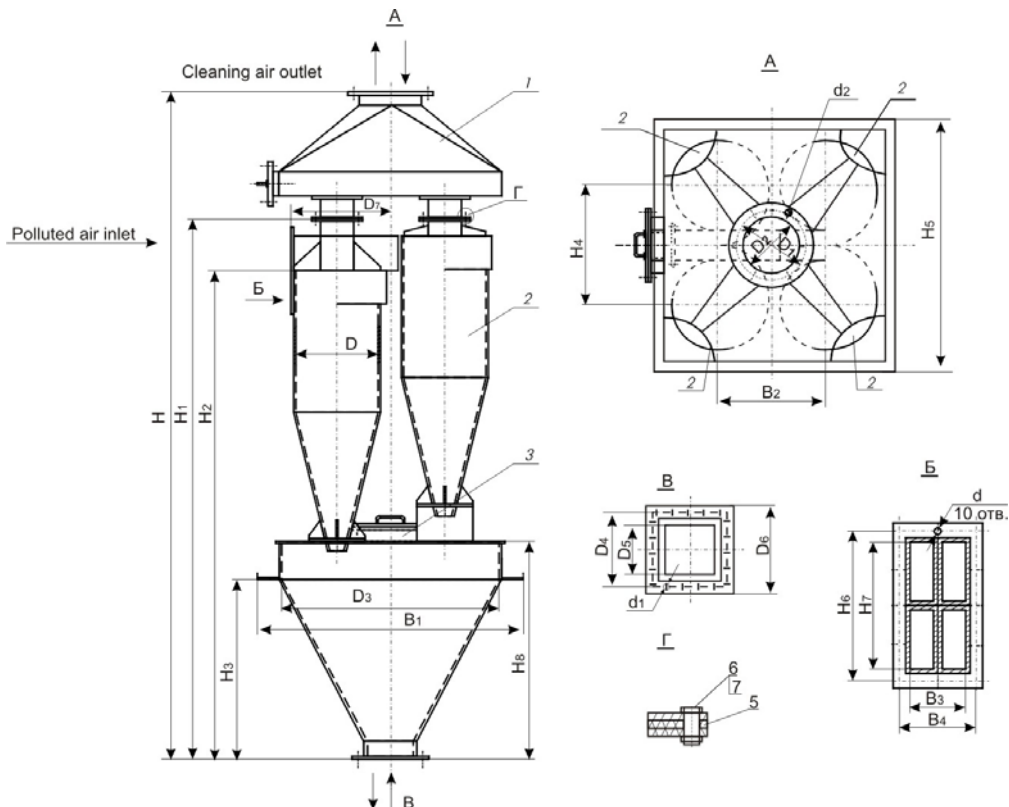
OF CYCLONES SCC-40

Table 3

Group cyclone type	D	D ₁	D ₂	D ₃	D ₄	D ₅	D ₆	D ₇	H	H ₁	H ₂	H ₃	H ₄
SCC40-300x4	300	274	237	660	360	300	406	338	2209	1774	1576	440	404
SCC40-400x4	400	354	317	860	360	300	406	444	2823	2324	2086	610	536
SCC40-500x4	500	415	377	1050	360	300	406	548	3511	2933	2637	780	668
SCC40-600x4	600	572	530	1240	360	300	408	654	4200	3583	3248	950	804
SCC40-700x4	700	572	530	1450	360	300	408	758	4774	4111	3738	1130	936
SCC40-800x4	800	677	630	1660	360	300	408	862	5556	4720	4289	1310	1068
SCC40-900x4	900	767	720	1860	360	300	408	966	6255	5343	4859	1480	1200
SCC40-1000x4	1000	867	820	2060	360	300	408	1072	6916	5928	5369	1530	1332
SCC40-1100x4	1100	967	920	2270	360	300	408	1176	7444	6384	5801	1560	1472
SCC40-1200x4	1200	967	920	2470	360	300	408	1280	8048	6904	6261	1680	1604

Table 4

Group cyclone type	H ₅	H ₆	H ₇	H ₈	B ₁	B ₂	B ₃	B ₄	d	d ₁	d ₂	M, Kg
SCC40-300x4	730	268	232	644	866	370	100	136	8	13	12	260
SCC40-400x4	890	344	308	844	1066	480	132	168	8	13	12	400
SCC40-500x4	1070	428	384	1085	1256	588	164	208	10	13	14	570
SCC40-600x4	1290	508	462	1385	1448	698	198	244	10	13	14	1070
SCC40-700x4	1470	584	538	1565	1658	806	230	276	14	13	14	1400
SCC40-800x4	1680	660	614	1806	1868	914	262	308	14	13	14	1720
SCC40-900x4	1880	748	690	2066	2070	1022	294	350	14	13	14	2370
SCC40-1000x4	2090	824	766	2266	2270	1132	326	384	18	13	18	2890
SCC40-1100x4	2290	908	846	2386	2482	1240	363	424	18	13	18	4560
SCC40-1200x4	2420	984	922	2536	2682	1348	394	456	18	13	18	5350



Scheme of cyclone SCC-40
 1-cleaned air chamber; 2-cyclone; 3-hatch; 4-bunker.